

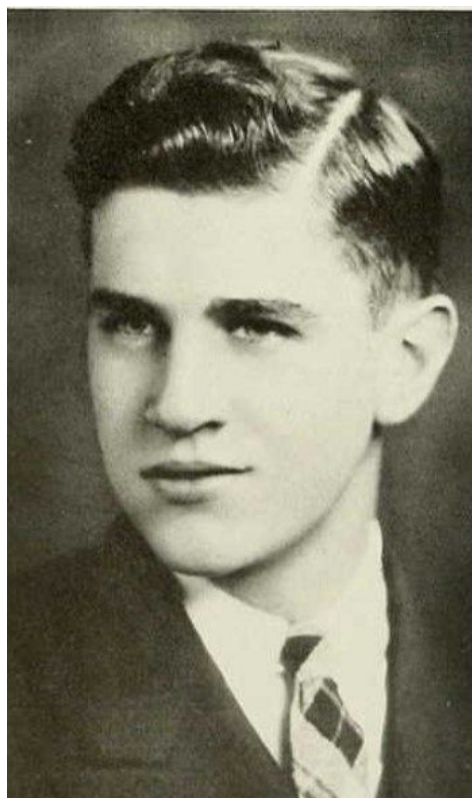
Fields of Honor Memorial

Exported from the Fields of Honor Foundation Memorial on 02-01-2026 at 02:43

[View this record at fieldsofhonor.com](https://fieldsofhonor.com)



Fields of Honor
Foundation



Personal info

Full name

PERRY, Thomas Benton

Date of birth

14 July 1916

Age

27

Place of birth

York, York County, Nebraska

Hometown

Alameda County, California

Military service

Service number

O-694894

Rank

Second Lieutenant

Unit

**700th Bombardment Squadron,
445th Bombardment Group, Heavy**

Awards

Purple Heart

Death & Grave

Status

Killed in Action

Date of death

21 April 1944

Cemetery

American War Cemetery Ardennes

Plot	Row	Grave
D	4	43

Immediate family

Members

Benton Perry (father)

Elizabeth L. (Hart) Perry (mother)

Francis H. Perry (brother)

Betty L. Perry (sister)

Plane data

Serial number

42-100203

Data

Type: B-24J

Destination: Zwickau, Germany

MACR: 3831

More information

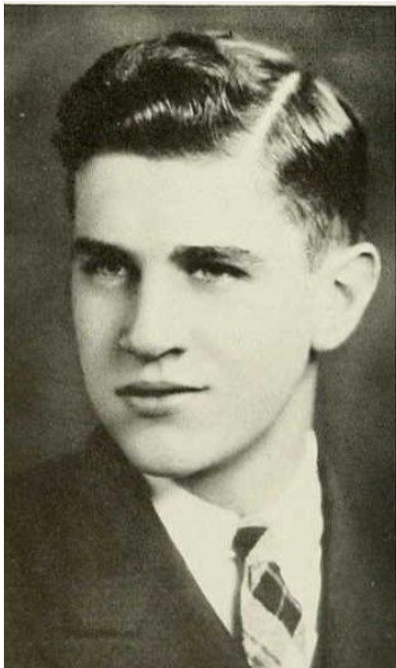
2nd Lt. Thomas B. Perry graduated from York High School in 1934 and Swarthmore College in 1938. He obtained a law degree from the University of California at Berkeley.

He enlisted on 23 November 1942 in San Francisco, California. He was sent overseas in February 1944.

The plane was in a straight 45 dive. And the entire under part was on fire.

the picture was taken in high school in 1938.

Photos



Source of information: Peter Schouteten, Terry Hirsch, www.wwiimemorial.com, www.archives.gov, WWII Draft Card

Photo source: Peter Schouteten, Swarthmore College 1938